

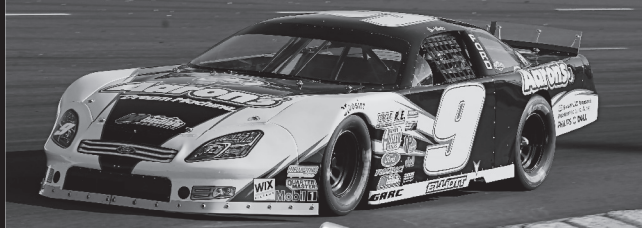
REAL RACE ENGINES!

True BLUE.

Factory-Engineered Parts for Circle Track Racers

Ford Racing offers factory engineered parts for the Sportsman Circle Track racer.

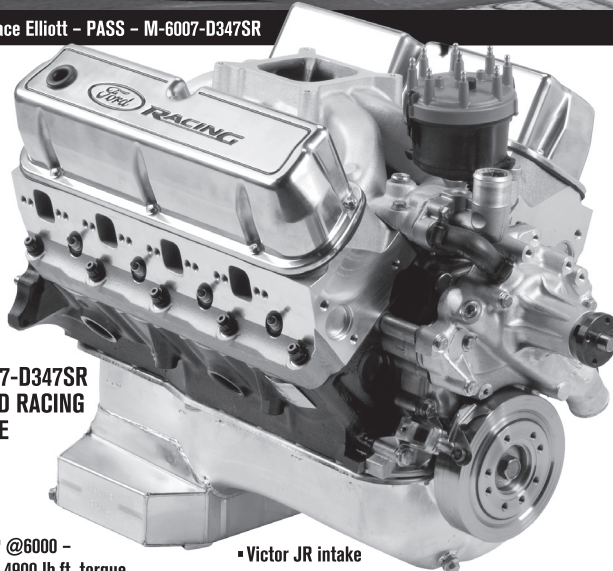
Ford Sealed Racing Engines are built to professional racing series standards and deliver reliable lasting performance. These aren't built from repackaged production parts – but real racing parts like Forged Crank, Rods and Pistons with full floating piston pins. Based on the BOSS 302 race block these engines deliver reliable and consistent performance lap after lap. Both are designed to be exact alternatives to GMPP Crates.



Chace Elliott – PASS – M-6007-D347SR



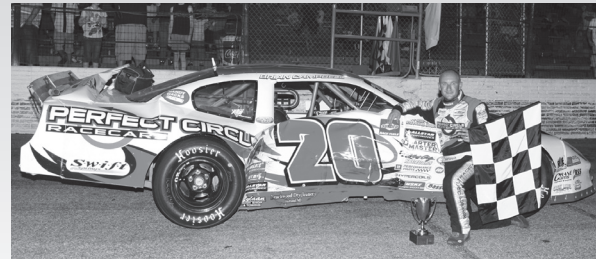
Bernhardt-Helliwell – ACT – M-6007-S347 JR



**M-6007-D347SR
SEALED RACING
ENGINE**

- 415 HP @6000 – 400 @ 4900 lb.ft. torque
- SCAT Forged Crank and Rods
- Mahle forged pistons w/ floating pin
- F303 hydraulic roller cam
- Ford Racing “Z” heads
- Victor JR intake
- 7 quart baffled pan w/ scraper and windage tray
- MSD billet distributor
- Competes directly with GMPP 604 Crate

BLUE OVAL D347SR ENGINES SWEEP THE ASALMS RACE AT PLYMOUTH SPEEDWAY



1ST- BRIAN CAMPBELL 2ND- EDDIE HOFFMAN 4TH- ROBBIE PYLE



www.fordracing.com
fordracingparts.com/circletrack